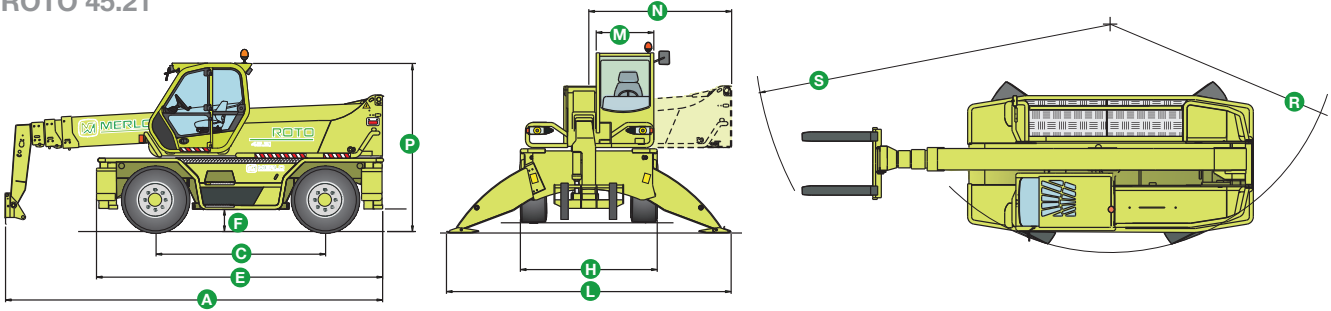


ROTO 45.21

TECHNICAL DATA

ROTO 45.21



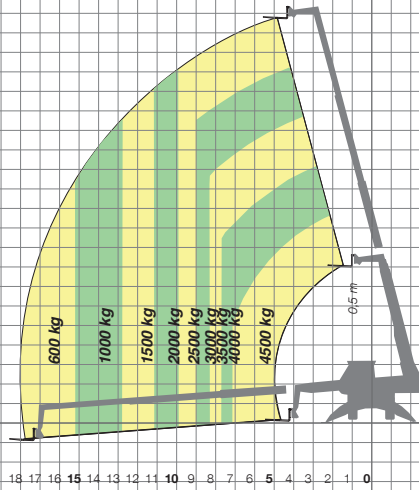
- **Maximum load capacity 4500 kg**
- **Maximum lift height 20.8 metres**
- **Turret rotation up to 600° (±300°)**
- **Cab steel frame complying with the international ISO 3449 Level II FOPS (Falling Object Protective Structure) standard**
- **Electro-mechanical joystick controls**
- **Steering wheel tilt adjustable by up to 16 degrees**
- **Folding stabilizers**
- **Hydropneumatic suspension** ensuring maximum driving comfort and stability when operating on tyres, by levelling the machine
- **Telescopic boom extension mechanism** housed entirely **within the boom** assembly for maximum protection and reliability
- **Fork carriage equipped with the hydraulic locking Tac-Lock system** giving an extraordinary competitive advantage against conventional, manual hook-up systems
- **Deutz turbo 4 cylinder engine, delivering 88 kW (120 HP)**
- **Hydrostatic transmission**
- **Load-sensing hydraulic pump**
- **Maximum speed 25 kph**

DIMENSIONS	45.21
A (mm)	6600
C (mm)	2970
E (mm)	5060
F (mm)	430
H (mm)	2400
L (mm)	5030
M (mm)	995
N (mm)	2505
P (mm)	2980
R (mm)	4050
S (mm)	6100

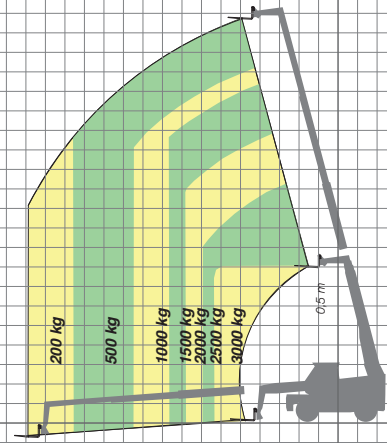
CHARACTERISTICS AND PERFORMANCE	45.21
Total weight unladen, with forks (kg)	15050
Maximum load capacity (kg)	4500
Maximum lift height (m)	20.8
Maximum forward reach (m)	18
Lift height at maximum load capacity (m)	10,6
Forward reach at maximum load capacity (m)	7.1
Load capacity at maximum height (kg)	2500
Load capacity at maximum forward reach (kg)	600
Turret rotation (degrees)	600 ⁽¹⁾
Engine (make/cylinder)	Deutz/4
Tier 3 engine power (kW/HP)	88/120
Fuel capacity (l)	150
Speed in the 1 st gear (kph)	7
Speed in the 2 nd gear (kph)	25
Load-Sensing hydraulic system (bar-l/min)	240-115
Hydraulic oil capacity (l)	160
Electrical circuit (V)	12
Battery (Ah)	160
Hydraulically controlled stabilizers	● ⁽²⁾
Hydropneumatic suspension	-
Cab compliant with FOPS standards	●
Tilting cab	-
Merlin electronic control system	-
Electro-mechanical joystick controls	●
Electronic joystick controls	-
Tac-Lock attachment coupling	● ⁽³⁾
Auxiliary boom hydraulic service	●
Two floating forks (1,200 mm long)	●
Hydrostatic transmission	●
Hydrostatic oil capacity (l)	12
Finger-Touch direction reversing control	●
Permanent four-wheel drive	●
Four wheel steering	●
Service disk brakes on all wheels	●
Automatically locking parking brake	●
Tyres	18-22.5
Radio remote control	○
Pneumatic seat	○
Rear differential lock	○
Four cab working lights (2 f. + 2 r.)	○
Manual air conditioning system	○
Roof window wiper	○
Manual battery isolator	○
Front and roof sun shade	○

● Standard. ○ Optional.
Performance figures refer to the machine equipped with forks, operating on stabilizers.
(1) ±300° with reference to the longitudinal axis of the machine;
(2) Stabilising and levelling can be performed automatically;
(3) ZM2 version front tool holder.

ROTO 45.21
FORKS ON STABILIZERS THROUGH 360°



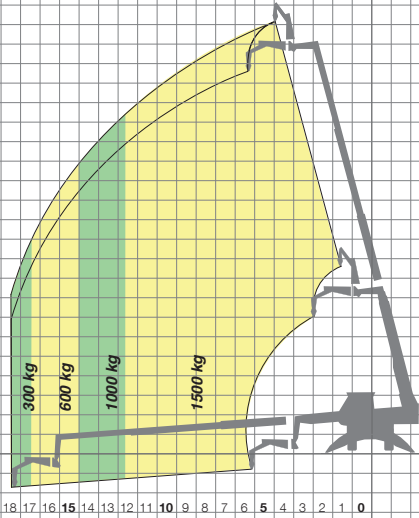
21
20
19
18
17
16
15
14
13
12
11
10
9
8
7
6
5
4
3
2
1
0



ROTO 45.21
FORKS ON TYRES - FRONT

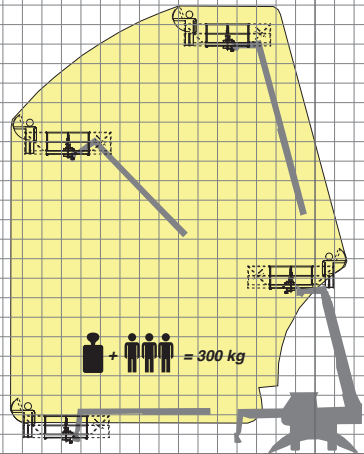
16 15 14 13 12 11 10 9 8 7 6 5 4 3 2 1 0

ROTO 45.21
FLY-JIB WITH WINCH THROUGH 360°



18 17 16 15 14 13 12 11 10 9 8 7 6 5 4 3 2 1 0

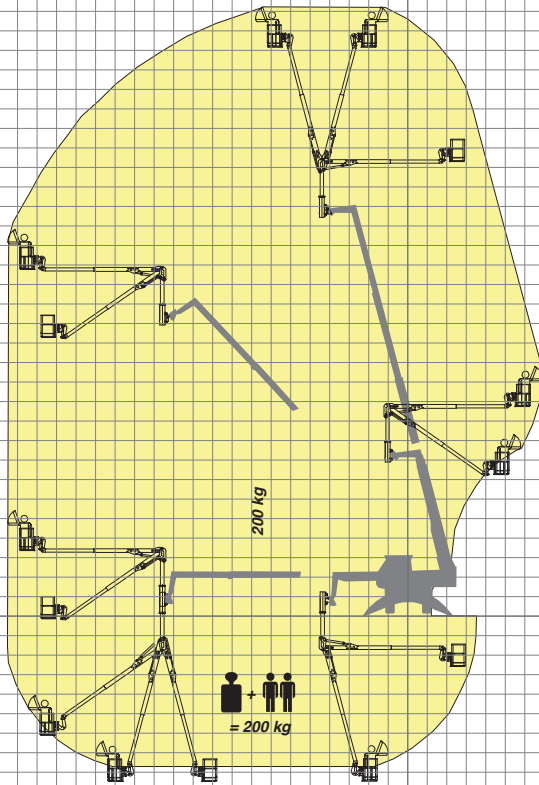
24
23
22
21
20
19
18
17
16
15
14
13
12
11
10
9
8
7
6
5
4
3
2
1
0
-1
-2



ROTO 45.21
AERIAL WORK PLATFORM THROUGH 360°

15 14 13 12 11 10 9 8 7 6 5 4 3 2 1 0

ROTO 45.21
SPACE SYSTEM THROUGH 360°



20 19 18 17 16 15 14 13 12 11 10 9 8 7 6 5 4 3 2 1 0 -1 -2 -3 -4 -5 -6 -7

33
31
30
29
28
27
26
25
24
23
22
21
20
19
18
17
16
15
14
13
12
11
10
9
8
7
6
5
4
3
2
1
0
-1
-2
-3
-4
-5
-6
-7
-8
-9